

SORA 3

45' Nelson Pilot Boat



Principal particulars

Vessel name	SORA 3
Builder	Berthon Boats, UK
Year of build	1997
Flag	Qatar
Hull Material	GRP
Ship type	Crew transfer/survey
Flag	Qatar
LOA	13.72 m
B	3.76 m
T	1.07 m
Displ.	18 tonnes

Machinery

Main engines	2 x Caterpillar TA 3208 (2x 315 BHP)
Auxiliary Power	1 x Cummins Onan MDKDP (1 x 13.5 kVA)
Propulsion	2 x FPP
Max Speed	12 knots
FO Capacity	1100 liters
FW Capacity	200 liters
Range	150 nm

Navigation and Communications Equipment

Radar	Garmin GPSmap 721 XS
VHF	Sailor RT2048 VHF
Compass	Magnetic
AIS	Furuno FA 150 Class A
Chart Plotter	Garmin ECHOMap 52DV
SART	Koden MDC 900

Accommodation

Passenger capacity	6 Passenger seats
Air conditioning	
Toilets	

Safety equipment

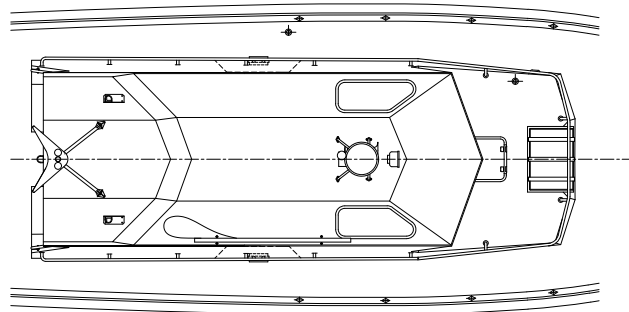
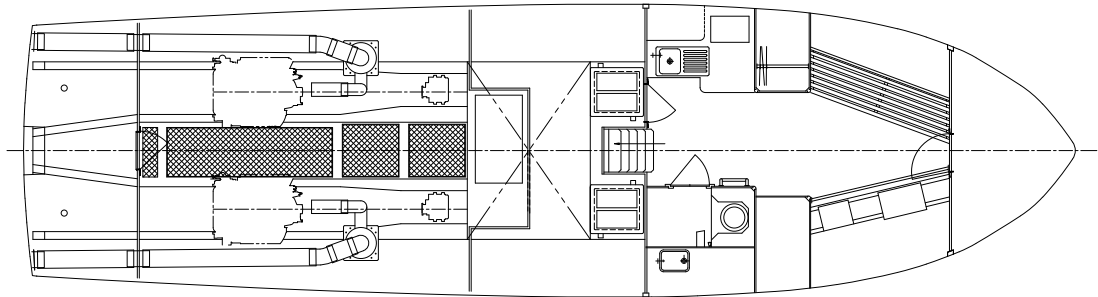
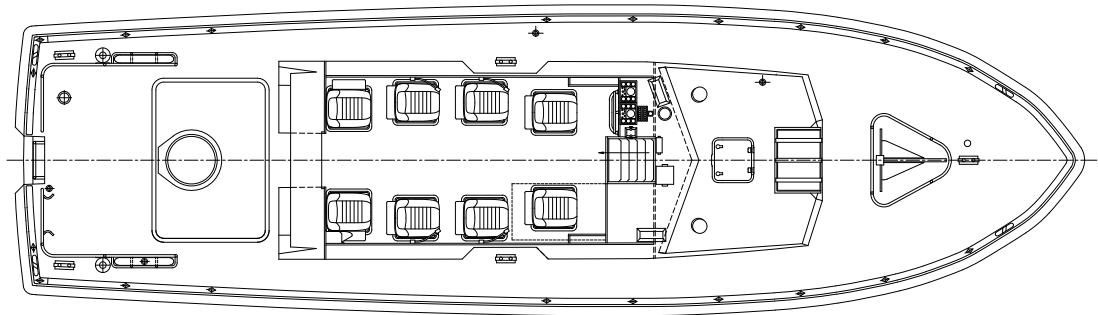
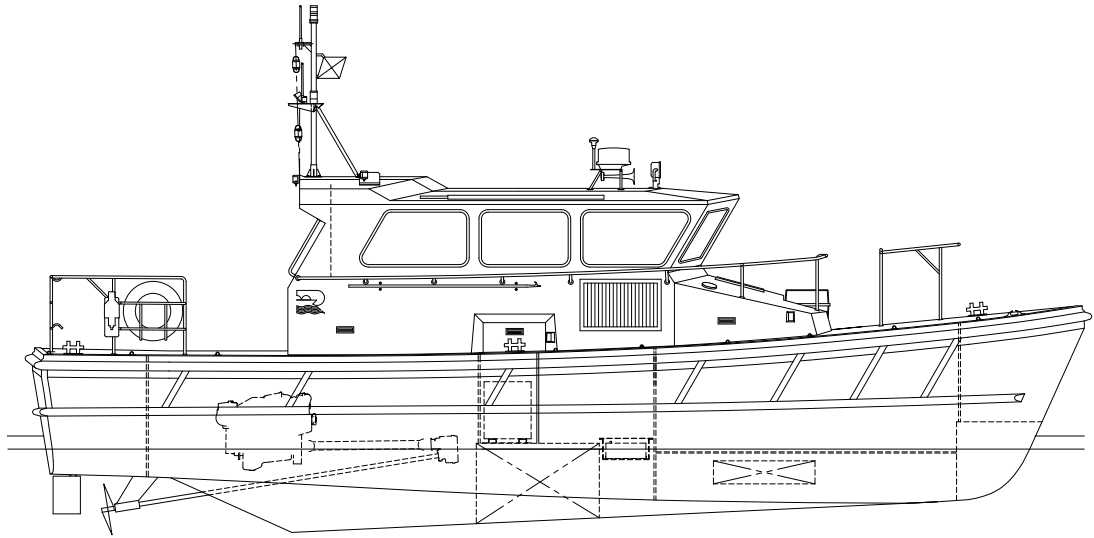
Fire extinguishers	4 x 2 kg Dry powder
Fixed fire fighting system	FM-200 / HFC-227
Fire detection system	Mircom NP-3084MI
Life raft	Sea Sava Plus 8 PAX

Sora Marine Services WLL

P.O. Box 22896, Doha, Qatar / T: +9744427177 / F: +974 4427 7117

info@soramarine.com / www.soramarine.com


SORA
Marine Services W.L.L.



Sora Marine Services WLL

P.O. Box 22896, Doha, Qatar / T: +9744427177 / F: +974 4427 7117

info@soramarine.com / www.soramarine.com

